



ASSEMBLY INSTRUCTIONS

TEMPO **VÄDERSTAD**

FOR DISC COULTER SEEDERS

Choosing a QDC-DXP® diffuser, optimizes the effectiveness of your microgranules and your seeds preservation!



To ensure the best preservation of your seeds, the microgranules need to be well positioned around the whole depth of the seed using a QDC-DXP® diffuser.

For this purpose, it is necessary to equip the micro granulator drop with a diffuser and to proceed with the assembly according to the brand and the type of the coulters or disc planter.

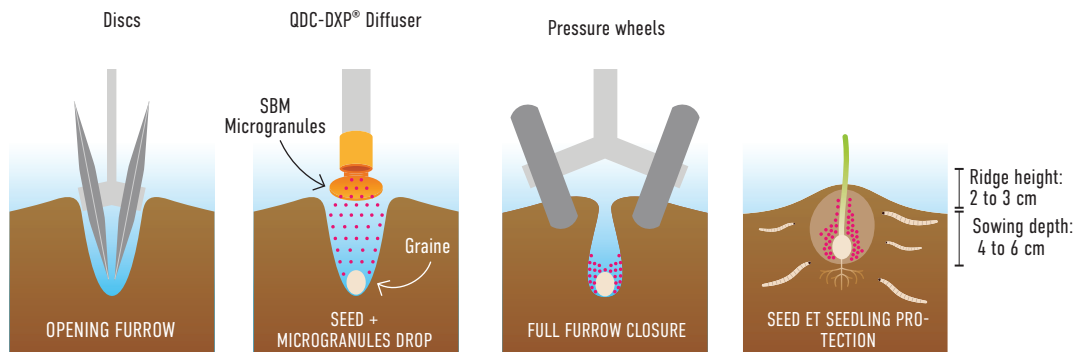
The kits for the QDC-DXP® diffusers installation together with their assembly instructions are available at your micro granule supplier.

Please follow the installation guidelines to optimize your micro granule's efficiency.

Application mode for single seed seeders (Maize, Sunflower, Sorghum)

It is important to carry out a **fine seedbed preparation** to ensure a uniform distribution of the microgranules over the entire seedbed section (see diagram below). The coarse preparations as well as a too deep seeding must be banned because they do not allow to realize an effective barrier of protection with your micro granulate around the seed. The optimum efficiency is achieved with a **seeding depth of 4 cm**.

In case of any doubts, please contact your distributor.



⚠ PRODUCT FOR PROFESSIONAL USE: PLEASE RESPECT THE TERMS AND CONDITIONS



INSTALLATION OF THE SPECIFIC VÄDERSTAD TEMPO SPREADER



Kit contents*



Diffuser made of flexible polyvinyl chloride, available to order on our website. www.kits-sav.com

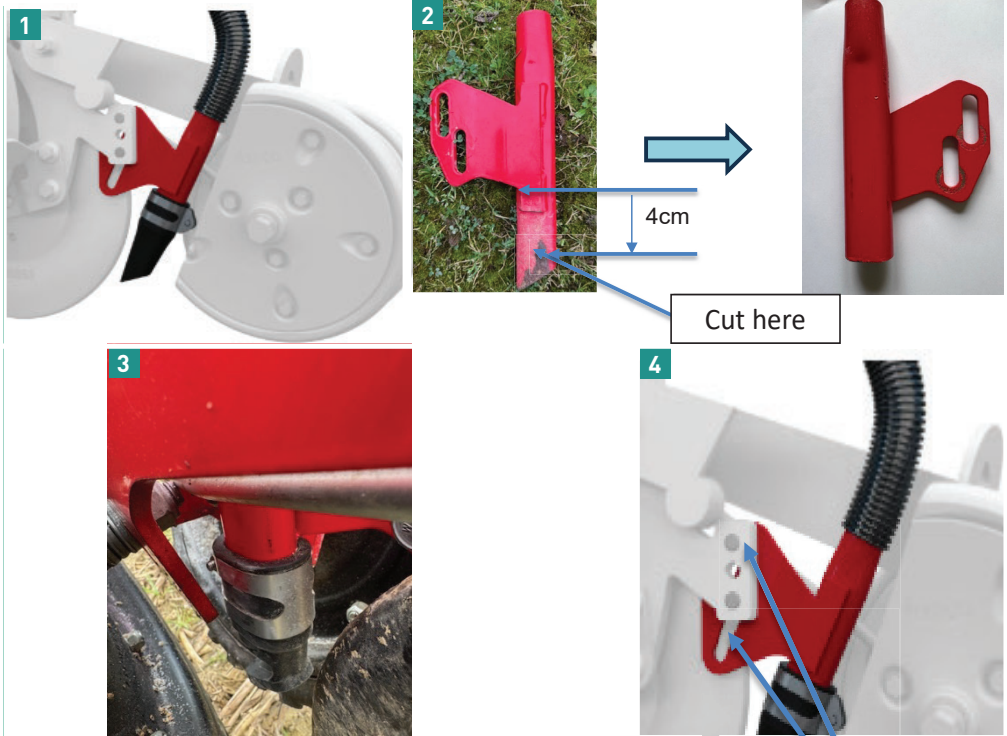
Tools



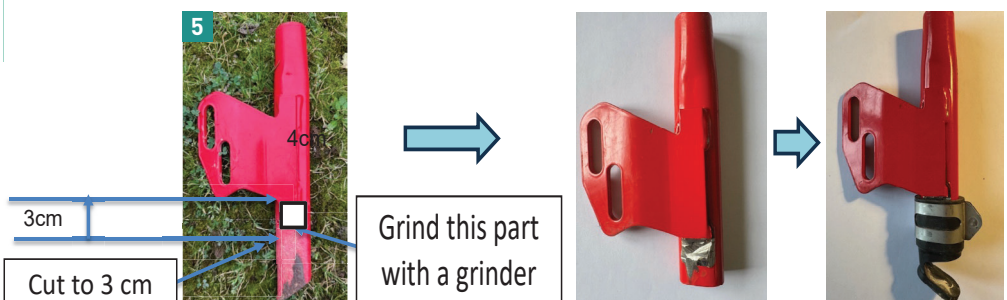
To assemble the diffuser, you must order the specific kit. **QDC-DXP®VADER.** Please refer to the photo of the parts supplied in the kit and the photo of the tools required to assemble these parts on your seed drill.

Assembly

- The original VÄDERSTAD flexible plastic coulter and MG burier must be removed and replaced with the above diffuser facing backwards. - **Photo 1**
- Most often on seed drills that are 2 to 5 years old, the original coulter is the one on the left. The descent must be cut to 4 cm as shown in the diagram above. - **Photo 2**
- The diffuser must be directed towards the rear and the clamping bolt towards the rear. This ensures that there are no problems with the seed press wheel. - **Photo 3**
- The adjustment for the coulter's «Light» setting must always be set to the highest position - **Photo 4**
- The limitation of this assembly is that the height of the diffuser is slightly too low and could break in stony soil. We need to work with VÄDERSTAD to improve this descent.
- We present a solution that allows you to gain 1 cm in height. - **Photo 5**



Mounting in the case of soil with stones



*In the event of breakage, replacement parts can be ordered from kits-sav.com, the supplier of the original kits.

TABLE OF MICROGRANULATOR SETTINGS

Determination of the microgranule dispenser settings for the application of soil insecticide to protect your maize, sunflower, sorghum and sweet corn sowing.

The microgranulator setting is crucial to apply the right dose of your microgranule and optimise its effectiveness against soil-borne pests.

Below are the indicative settings for the microgranule dispensers that provide a flow rate of around 12 kg/ha to be used for the application of microgranules.

For further settings, see <http://www.kits-sav.com>.

These flow rate values are indicative and should be checked regularly. They are valid for a sowing speed of 6 km/hour and according to the manufacturers' instructions.

For more details on microgranulator settings, we recommend that you contact your dealer or seed drill manufacturer.

SETTINGS TABLE FOR A 12 KG/HA DOSE Bulk density of the unconsolidated product: 1,4 kg / litre	80 cm width (96 g/100 m)	75 cm width (90 g/100 m)	60 cm width (72 g/100 m)	50 cm width (60 g/100 m)	Settings mechanism
	Settings	Settings	Settings	Settings	

KUHN PNII/PLII/MAXIMA

Insecticide rotor new frame	http://www.kits-sav.com				
Drive pinion (top)	20	16	16	16	pinions + index
Driven pinion (bottom)	16	20	20	20	
Index position	5	10.5	6.5	4.5	

NODET PNEUMASEM

Insecticide rotor previous frame	http://www.kits-sav.com				
Drive pinion (top)	16	16	12	12	pinions + index
Driven pinion (bottom)	20	20	24	24	
Index position	5,5	4.5	7.5	5	

MONOSEM MICROSEM

Insecticide rotor current model	http://www.kits-sav.com				
Pinion A	12	25	12	12	2-stage pinions
Pinion B	18	25	25	18	
Pinion C	20	12	20	12	

MONOSEM MICROSEM

Microsem with variable drive	http://www.kits-sav.com				

MASCHIO GASPARDO

Insecticide rotor	http://www.kits-sav.com				
Index position	A9	A8	A5	A3,5	Pinions

TECHNICAL TEAMS AT YOUR SERVICE



WEBSITE



E-MAIL ADDRESS



HOTLINE

www.kits-sav.com kits.sav@sbm-company.com + 33 (0) 6 72 40 94 31

SBM Développement declines all liability for the efficacy of the soil microgranule insecticide products approved and manufactured by SBM Développement or its subsidiaries («SBM Microgranules»), requiring the use of the QDC-DXP® in the following cases:

- If SBM Micro Granules are applied with non-recommended equipment, or if the QDC-DXP® diffuser assembly or the settings are not compliant with the technical specifications given by the company or its dealers.
- If SBM Micro Granules are not applied with the QDC-DXP® diffuser specially designed to do so, or if the application is carried out without a diffuser.

As the QDC-DXP® diffuser was specifically designed for the application of SBM microgranules, SBM Développement declines all liability for the use of the QDC-DXP® to apply products other than SBM Microgranules.

